

# ArchaeoMAP

## Automatic Distribution Mapping of Finds and Contexts

**ArchaeoMAP** eases the analysis of archaeological excavations.

Teamed with the database **ArchaeoDATA**, the distribution mapping modul **ArchaeoMAP** for **ArchaeoCAD** facilitates the use of the CAD-based excavation documentation as a Geographical Information System (GIS).

During excavation analysis, finds and contexts retrieved from the database can be automatically plotted to archaeological plans according to user-defined parameters and criteria.

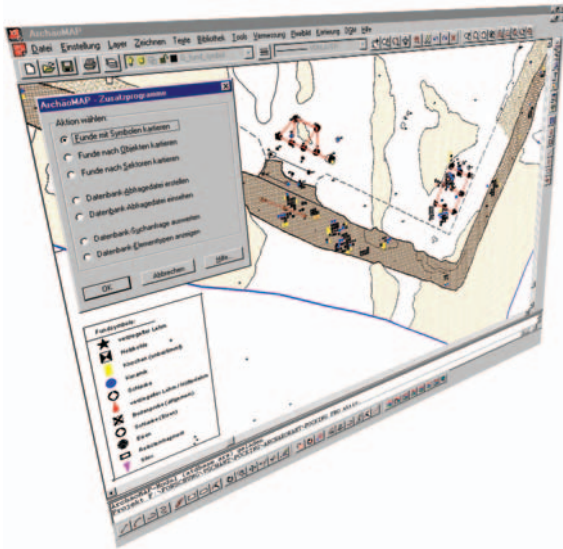
**ArchaeoMAP** is the ideal tool for processing and analysing large scale excavation projects with numerous contexts and finds.

In comparison with manual mapping **ArchaeoMAP** achieves a considerably higher precision and saves time.

**ArchaeoMAP** delivers perfect distribution mapping however complex the task.

- ✓ **Object-type distribution**
- ✓ **Chronological distribution**
- ✓ **Selective context distribution**
- ✓ **Automatic layer management**





## ArchaeoMAP

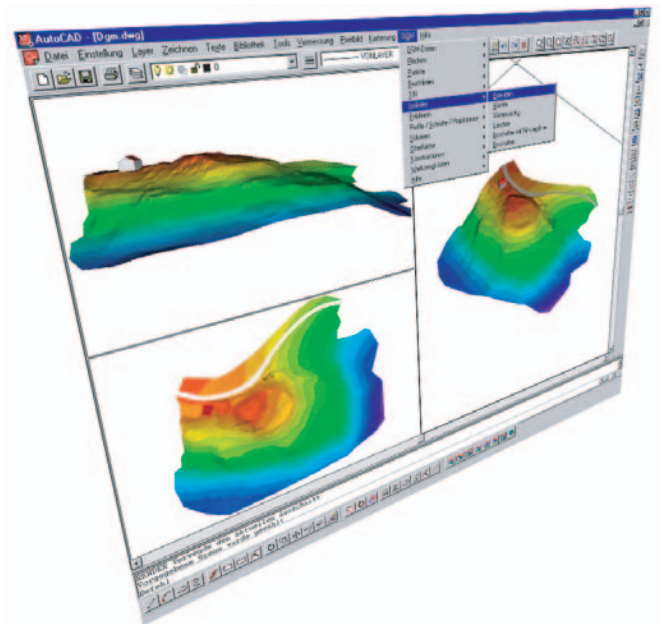
### The Ultimate Distribution Map Tool

**ArchaeoMAP** facilitates the combination of survey data with information from the database **ArchaeoDATA** (object definitions, dating, detailed descriptions etc.). Database queries can be used to create automatic distribution maps according to user defined parameters and criteria (thematic, chronological etc.).

## ArchaeoDTM

### Digital Terrain Modeller for Archaeology

**ArchaeoDTM** creates and edits three-dimensional landscape surfaces based on pre-existing data. The program offers numerous special functions for the creation of archaeological plans. **ArchaeoDTM** easily creates contour/form line plans, 3D-models, sections etc. for the recording and analysis of excavations and prospecting.



#### See for yourself:

We would be pleased to give you a personal demonstration of our software at our premises near Regensburg/Germany (free of charge), or at your place of work (covering charge). Or ask for our Demo-Version.

The **ArcTron** product family offers many more utilities for professional use on excavations and research projects. Detailed Informationen on our complete spectrum of powerful applications at [www.arctron.de](http://www.arctron.de)

## ArcTron

3D-Vermessung & Softwareentwicklung GmbH

Ringstraße 8 • D - 93177 Altenthann

Tel.: +49 (0) 9408 8501-0

Fax: +49 (0) 9408 8501-21

E-Mail: [info@arctron.de](mailto:info@arctron.de)